

ENHANCED 520TVL INFRARED D/N CAMERA



**20M
NIGHT VISION**

OVERVIEW

Model: **VDM26IR**

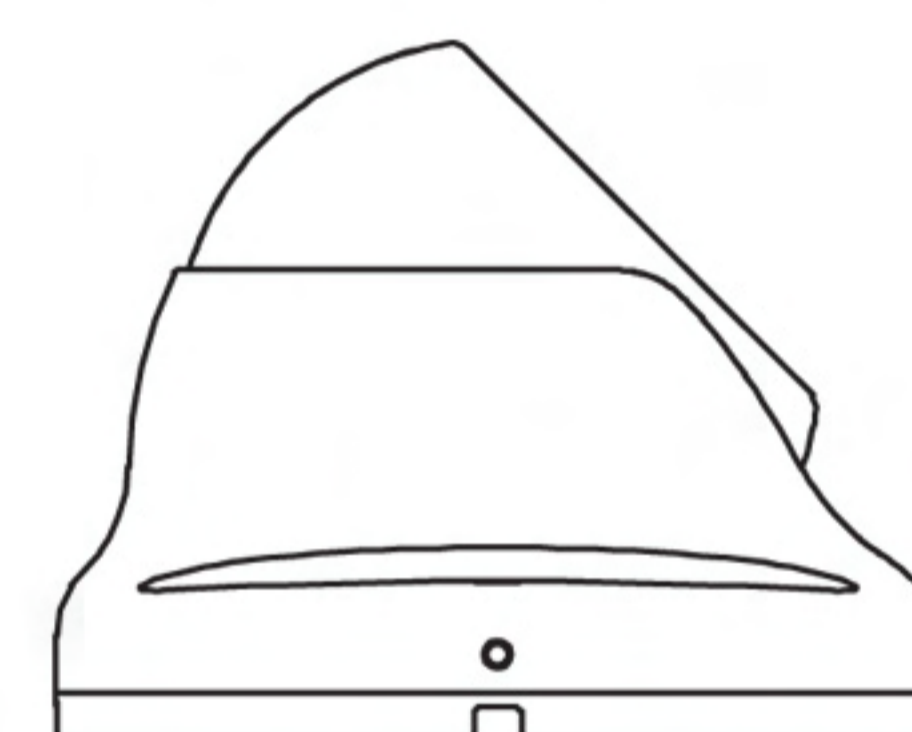
- 1/3" SONY CCD & DSP
- Enhanced 520TVL resolution
- IP65 aluminium weatherproof housing
- Dual glass technology
- 26 units of hi-power IR LED
- 20M infrared illumination
- 3 axis rotation
- IR corrected camera lens
- Available in 4mm and 6mm lens

IP65

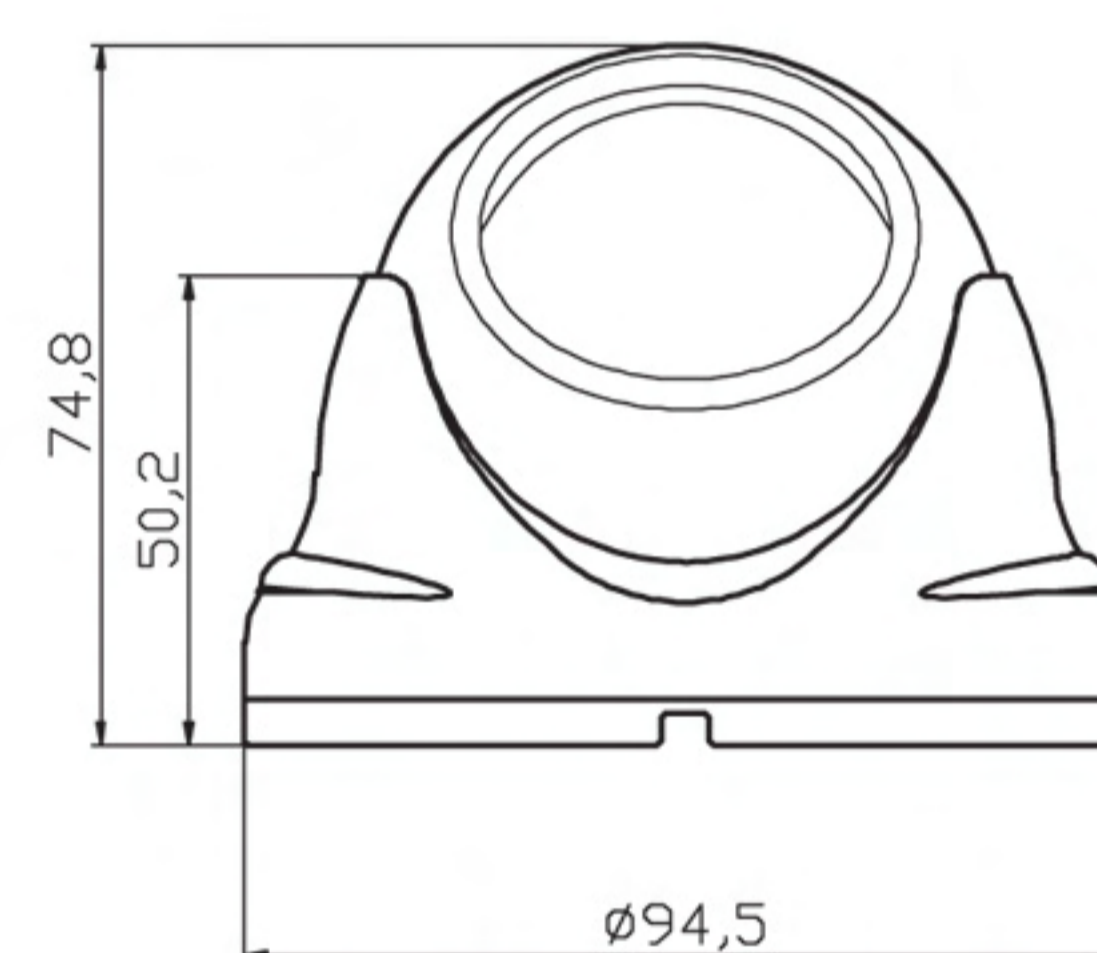
TECHNICAL SPECIFICATIONS

IMAGE SENSOR	- 1/3" SONY Super HAD CCD
VIDEO RESOLUTION	- Enhanced 520TV Lines
MINIMUM ILLUMINATION	- 0 Lux (IR On)
INFRARED DISTANCE	- Max. 20 meters (indoor)
INFRARED LED	- 26 pcs. - high power
SYNC SYSTEM	- Internal
WHITE BALANCE	- Auto
GAIN CONTROL	- Auto
SCANNING SYSTEM	- 2:1 interface
S/N RATIO	- More than 48db
ELECTRONIC SHUTTER	- PAL: 1/50 ~ 1/100000 sec. - NTSC: 1/60 ~ 1/100000 sec.
GAMMA CORRECTION	- 0.45
IRIS	- A.E.S
CAMERA LENS	- 4mm or 6mm (IR corrected)
VIDEO OUTPUT	- Composite 1.0Vp-p at 75 Ohms
OPERATION TEMPERATURE	- 5 °C to 60 °C
OPERATIONAL HUMIDITY	- Within 85% RH
POWER SUPPLY INPUT	- DC 12 volts
OPERATING CURRENT	- 190mA + - 10%
CASING CONSTRUCTION	- Aluminium die-cast
CAMERA NETT WEIGHT	- Approx. 400 grams.

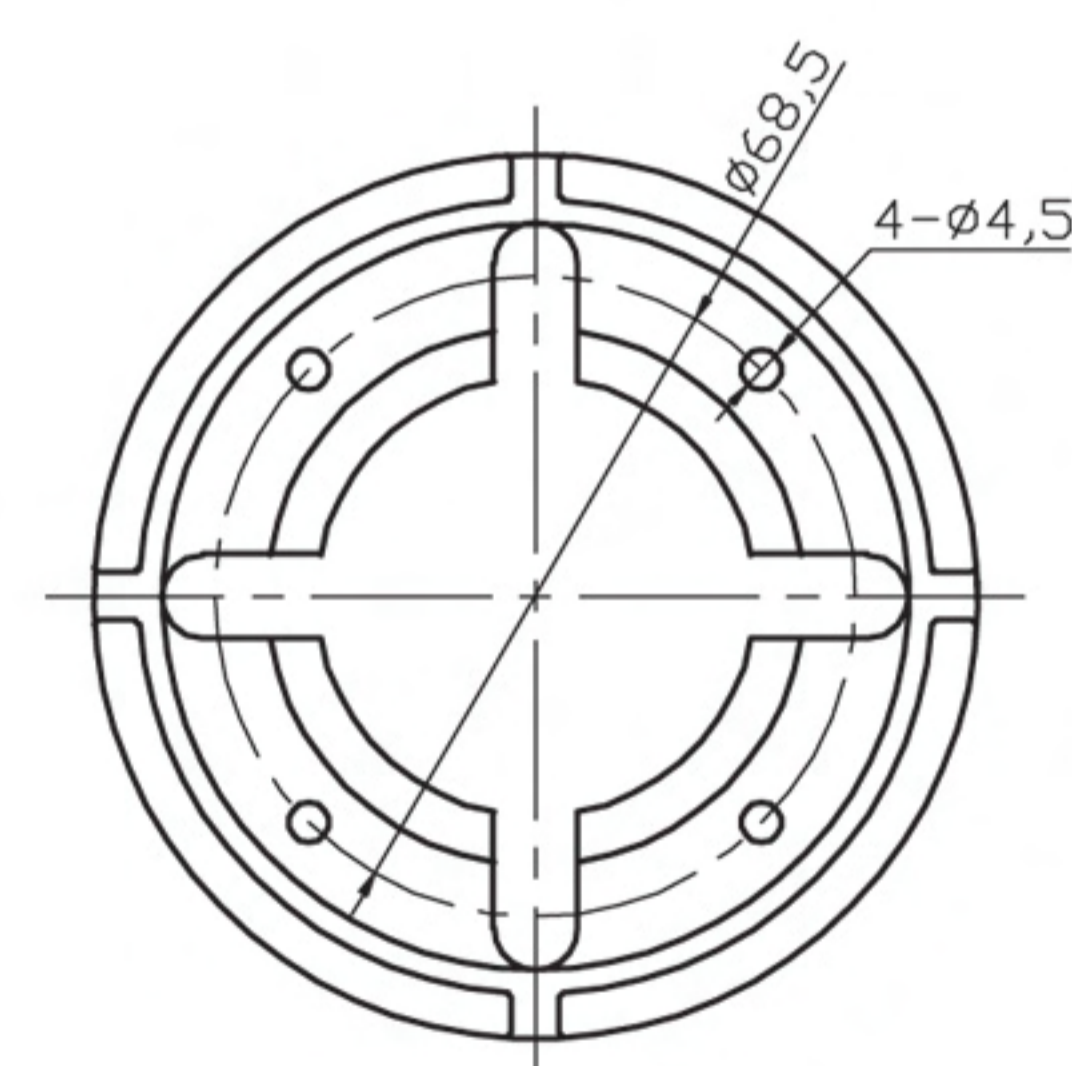
DIMENSION



SIDE VIEW



FRONT VIEW



BOTTOM VIEW

Authorised Dealer:

TANDÉR®

Specifications, description and design are subject to change without prior notice. The brands and products names are properties of their respective owners